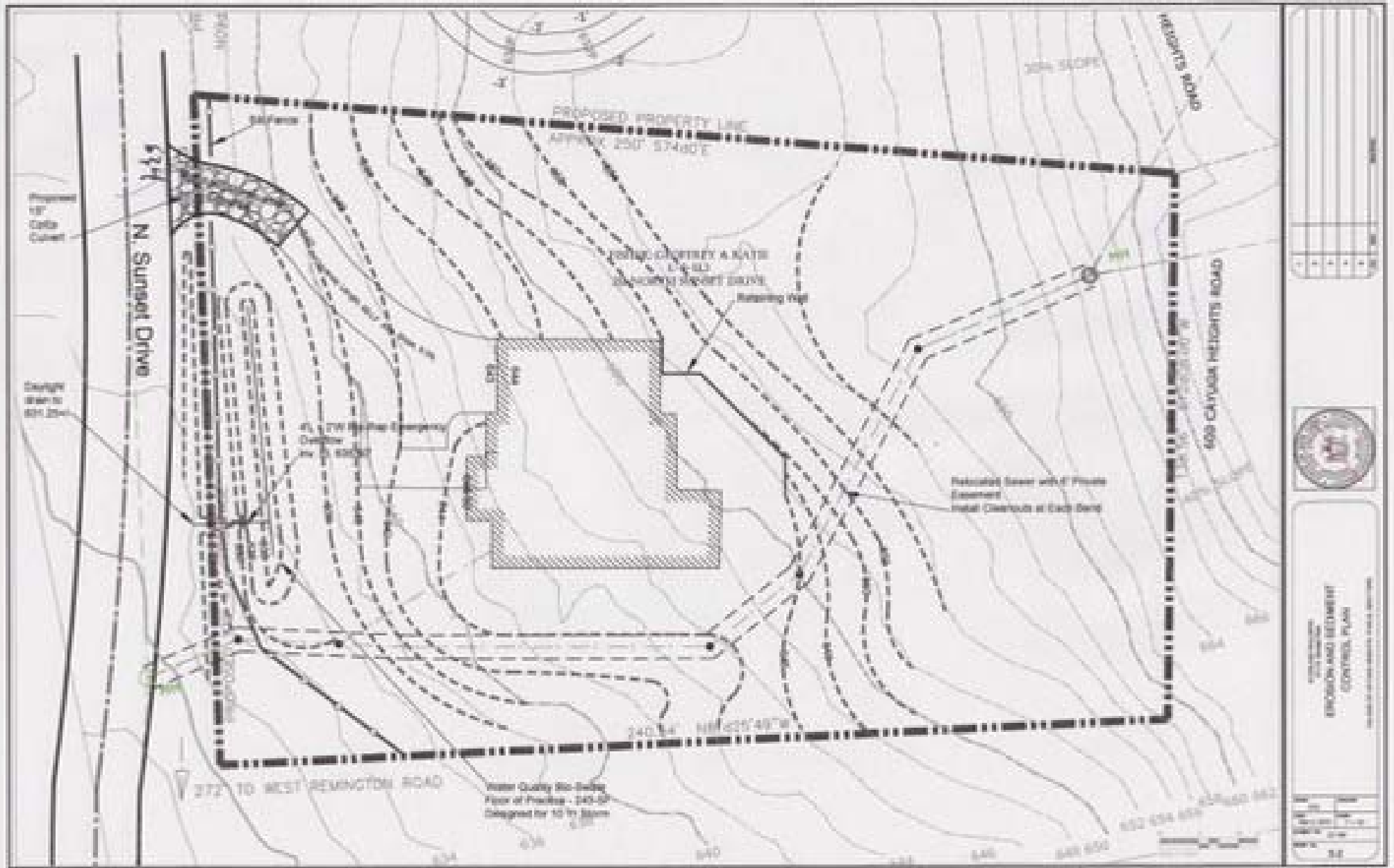


$$\text{Slope} = \frac{\Delta \text{ Elevation}}{\text{Length}} = \frac{9 \text{ Ft}}{99 \text{ Ft}} = .090 = 9\%$$



STATE OF CALIFORNIA  
 PROFESSIONAL ENGINEER  
 EXERCISE AND RESTRICTED  
 CONTROL PLAN

DATE	10/1/2011
BY	[Signature]
CHECKED BY	[Signature]
SCALE	AS SHOWN